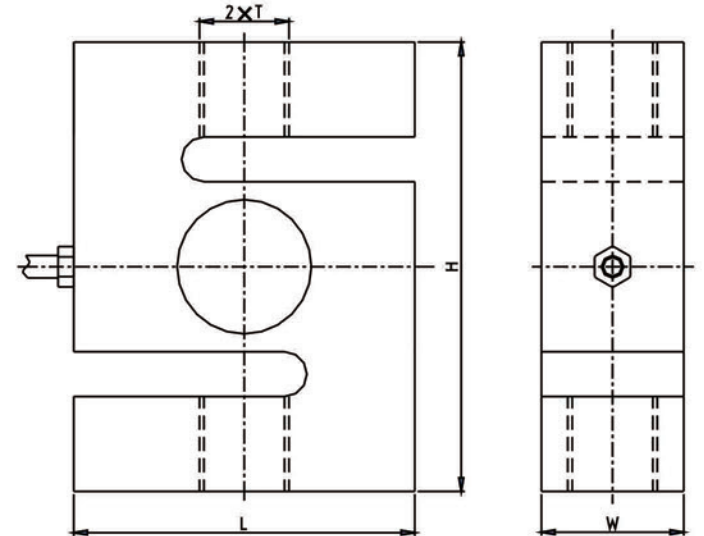




ALLOY STEEL

S-Beam



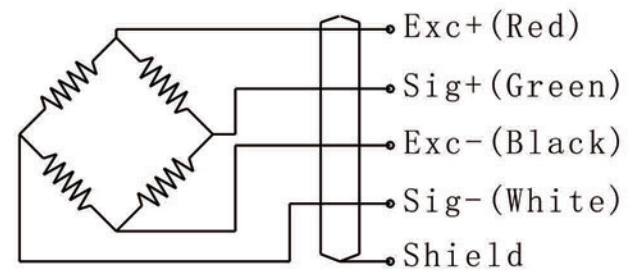
RATED CAPACITY

ton/mm (kg; t)	H	L	T	W
0.05 to 0.75	76.2	51	12	19.1
1t	76.2	51	12	25.4
1.2t to 5t	100.4	76.2	M20×1.5	31.8
10	177.8	127	M30×2	50.4

SPECIFICATIONS

Full scale Output:	2 ± 0.003mV/V (WL201)
	3 ± 0.003mV/V (WL202)
Zero Balance:	± 1% F.S
Accuracy class:	C3 OIML approval
Repeatability:	< ± 0.02% F.S
Hysteresis Error:	< ± 0.03% F.S
Creep (30 min):	< ± 0.02%F.S
Input Resistance:	400Ω ± 20Ω
Output Resistance:	352Ω ± 3Ω
Recommended Excitation:	10V (15V Maximum)
Insulation Resistance:	> 5000MΩ (50V DC)
Temperature Effect on Sensitivity:	< ±0.02% F.S/10°C
Temperature Effect on Zero Balance:	< ± 0.02% F.S/10°C
Compensated Temperature Range:	-10°C to 40°C
Operating Temperature Range:	-10°C to 40°C
Storage Temperature Range:	-30°C to 70°C
Safe Overload:	150% of full scale
Ultimate Overload:	250% of full scale
IP class:	Ip68
Material:	Alloy Steel

Wiring Schematic Diagram



INTERCHANGEABLE PRODUCTS

Manufacturer	Model
Keli Sensing	DEE / DEF